

Hobbs State Park Conservation Area

Bio-Data Report

Modern Gun Season

2006

Hobbs State Park Conservation Area

Hobbs State Park Conservation Area (Hobbs SPCA) is located in Benton, Madison and Carroll counties. The property lies 12 miles east of Rogers and 25 miles southwest of Eureka Springs. It is named after the former owner, Roscoe C. Hobbs. The area was acquired by the state to protect, preserve, and make available for public use. This undeveloped tract of land is located near a rapidly expanding population area.

The area of Hobbs SPCA is over 11,700 acres in size and its terrain is typical of the Ozark Mountain terrain. The area is predominantly made up of oak, hickory, and pine forest. The park is bordered on the north by Beaver Lake and the south by the War Eagle River.

Hobbs SPCA has modern gun, muzzleloader, and archery hunting seasons. White-tail deer, squirrel, turkey and raccoon can be hunted. The number of white-tail deer harvested is closely monitored, and the number of permits issued is based on the number of acres (80) per hunter. It is a goal of the park to incorporate the population of the deer herd, based on a biannual spotlight census, in the issuing of permits.

*Information about Hobbs State Park is from the AGFC Wildlife Management Areas.com.

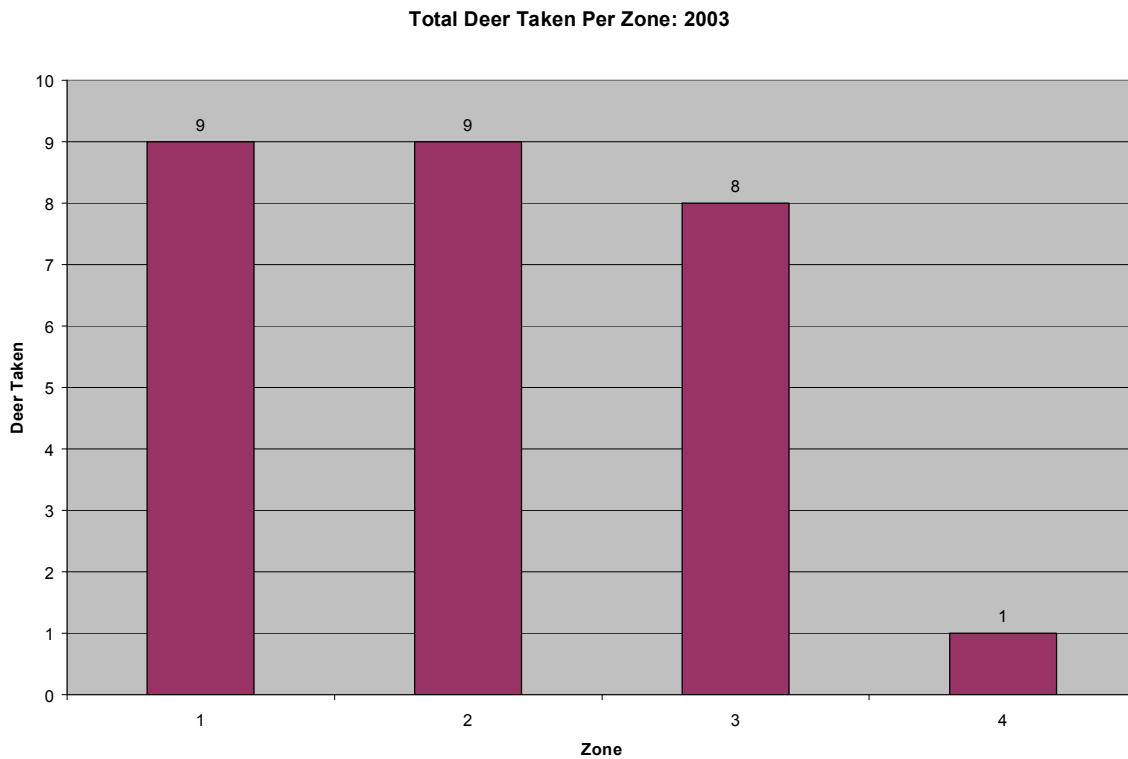
Information Included in Modern Gun Report

The information in this report contains an overview of the information used to insure the continued success of the white-tail deer population. The graphs contained in the report were created from data collected at the bio-check stations.

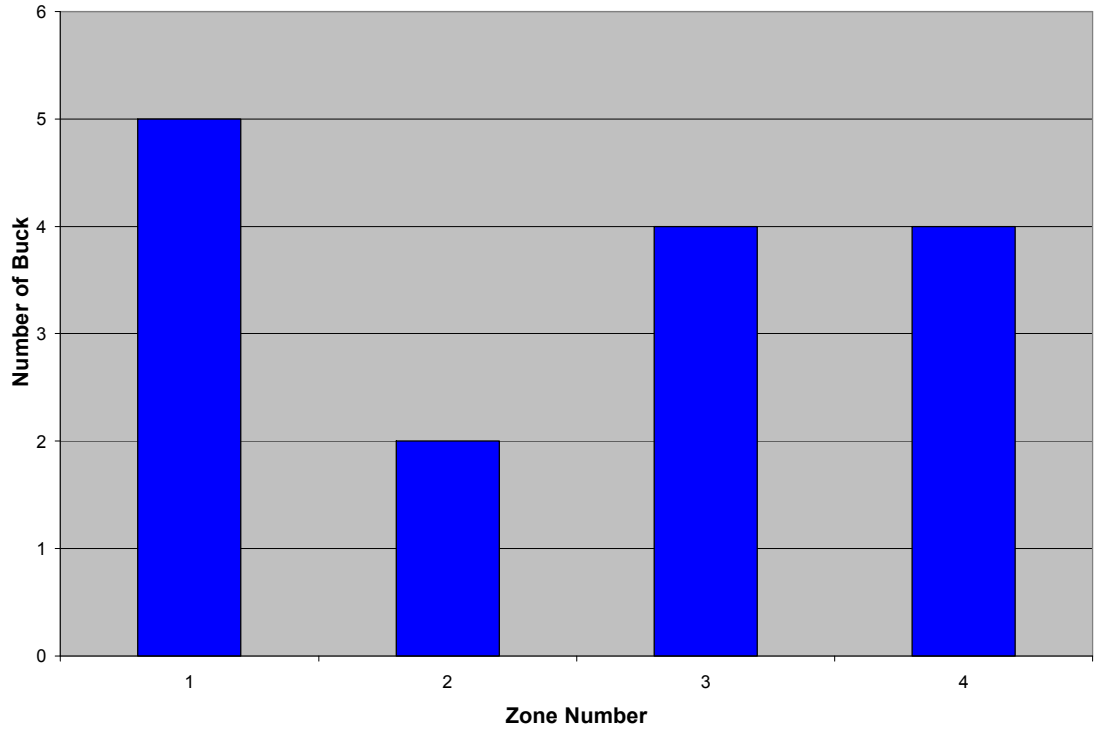
Since the spring of 2002, the modern gun and muzzleloader season data has been separated. This allows for a more precise monitoring of the hunting seasons' effect on the deer population.

The information is broken into the following groups: number of deer taken per zone, the average weights of the doe, the average weights and points of the bucks, and the number of hunters per day at Hobbs SPCA.

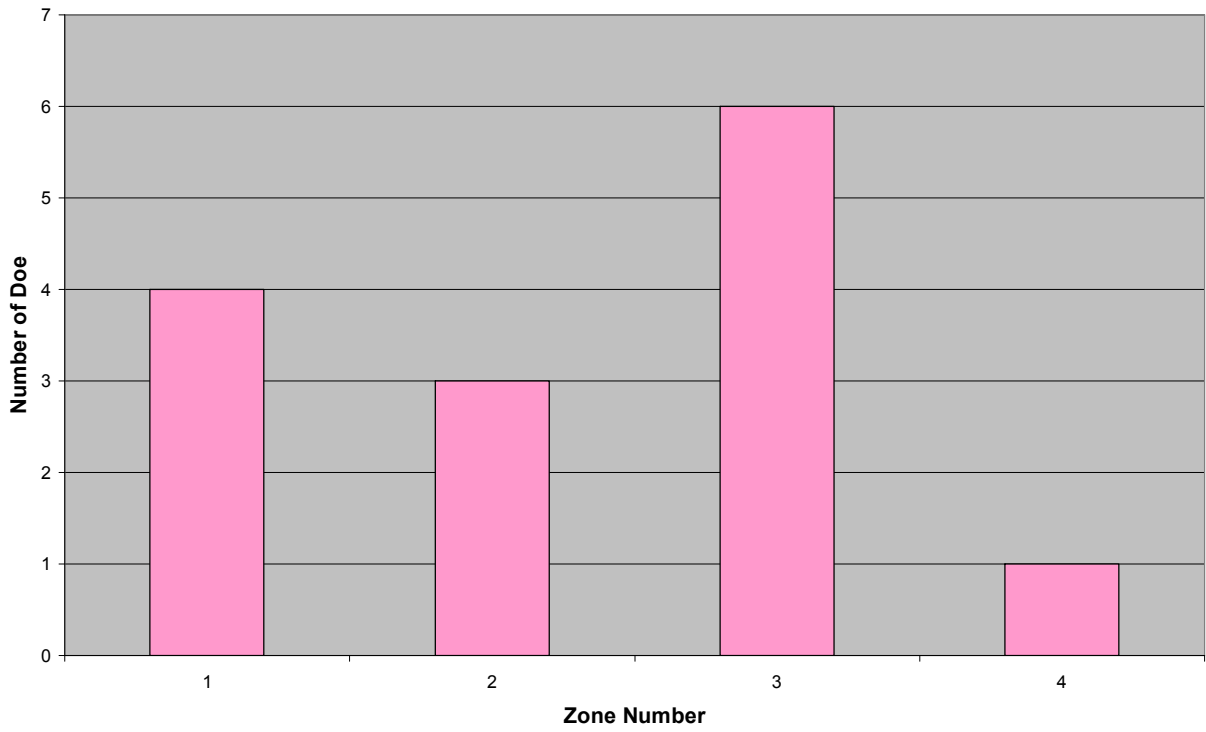
Number of Deer Taken Per Zone



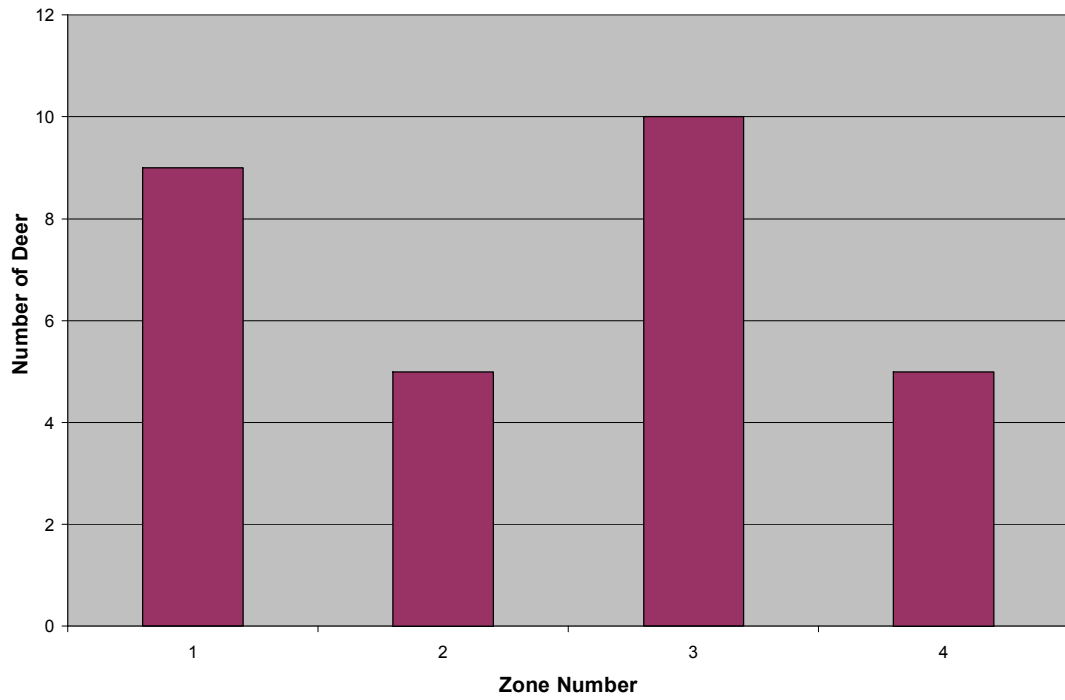
Number of Buck Taken Per Zone: 2004 MG



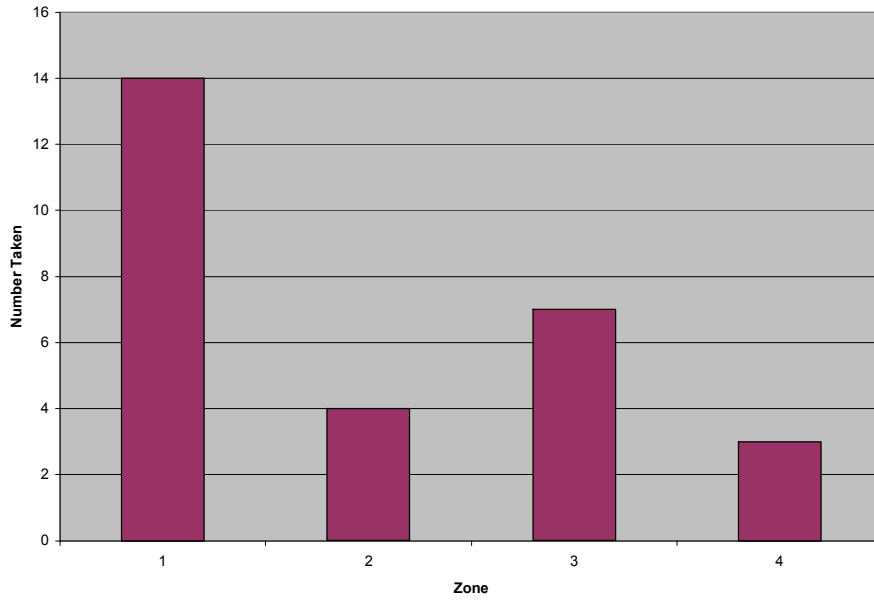
Number of Doe Taken Per Zone: 2004 MG



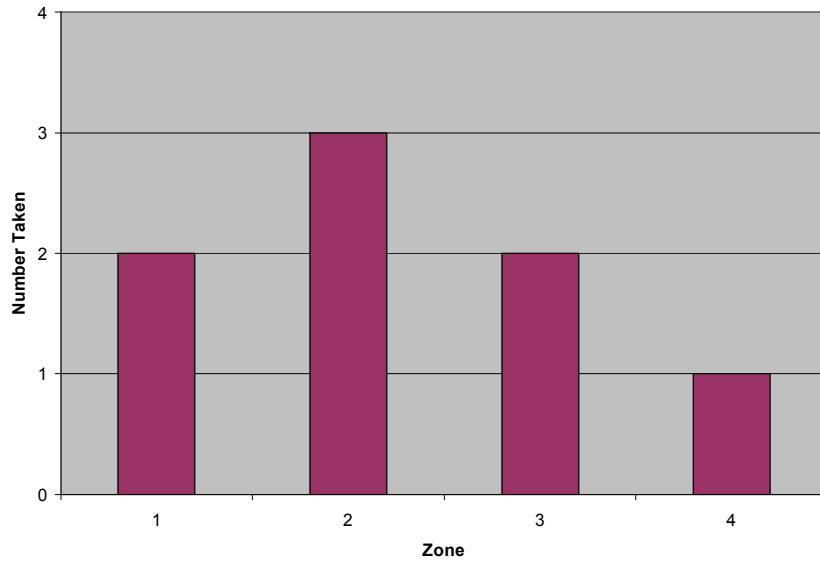
Number of Total Deer Taken Per Zone: 2004 MG



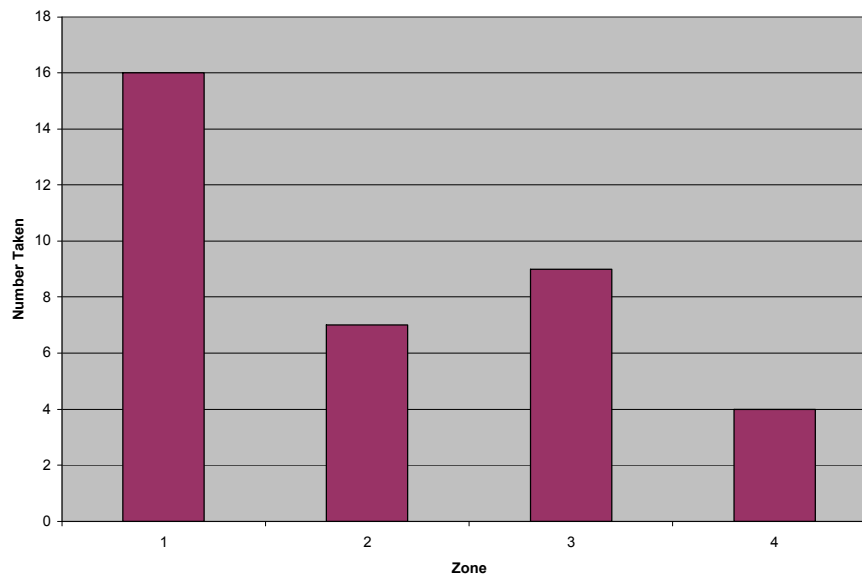
Number of Bucks Taken Per Zone: 2005



Number of Doe Taken Per Zone: 2005



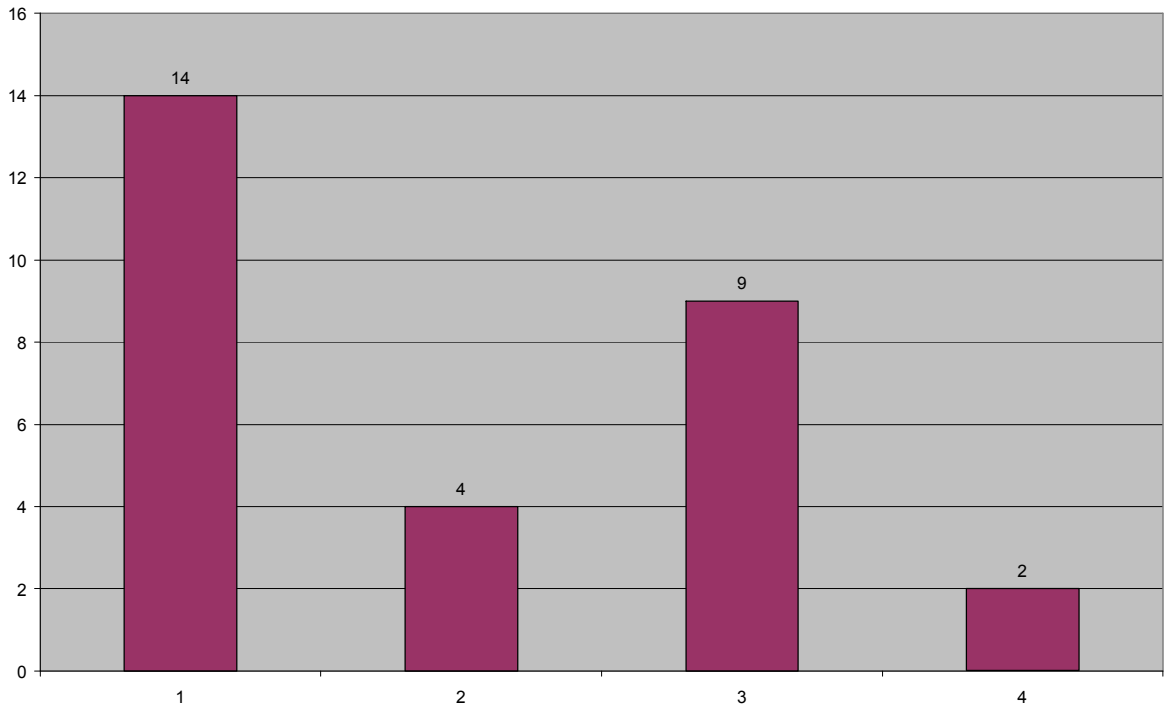
Total Deer Taken Per Zone: 2005



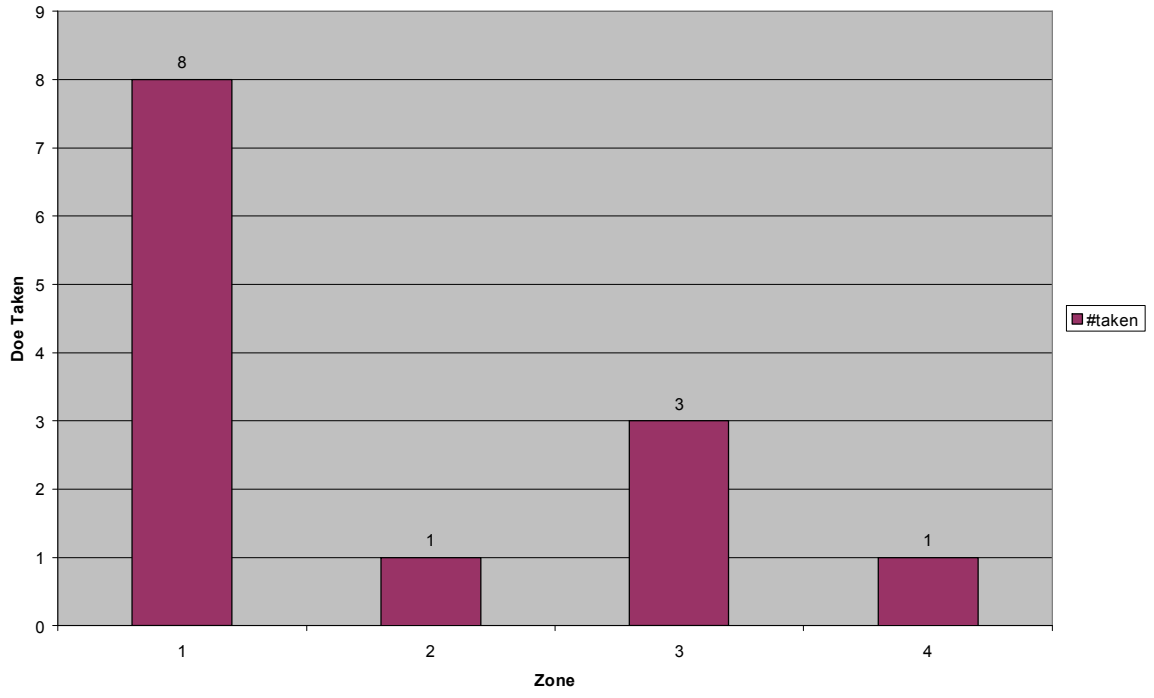
There was a difference of two deer taken between 2003 and 2004 MG seasons, and seven deer between 2004 and 2005. The number of deer taken per zone was more evenly distributed in the 2004 MG season than in the 2003 MG season. This variation could be due to the number of hunters who hunted in zones one and three. These zones also had more hunting in 2006. Hunters may have viewed them as being either more accessible or as having a greater chance of success.

Zone four consistently has a lower number of hunters through all four years, perhaps due to an inconvenient or less accessible location.

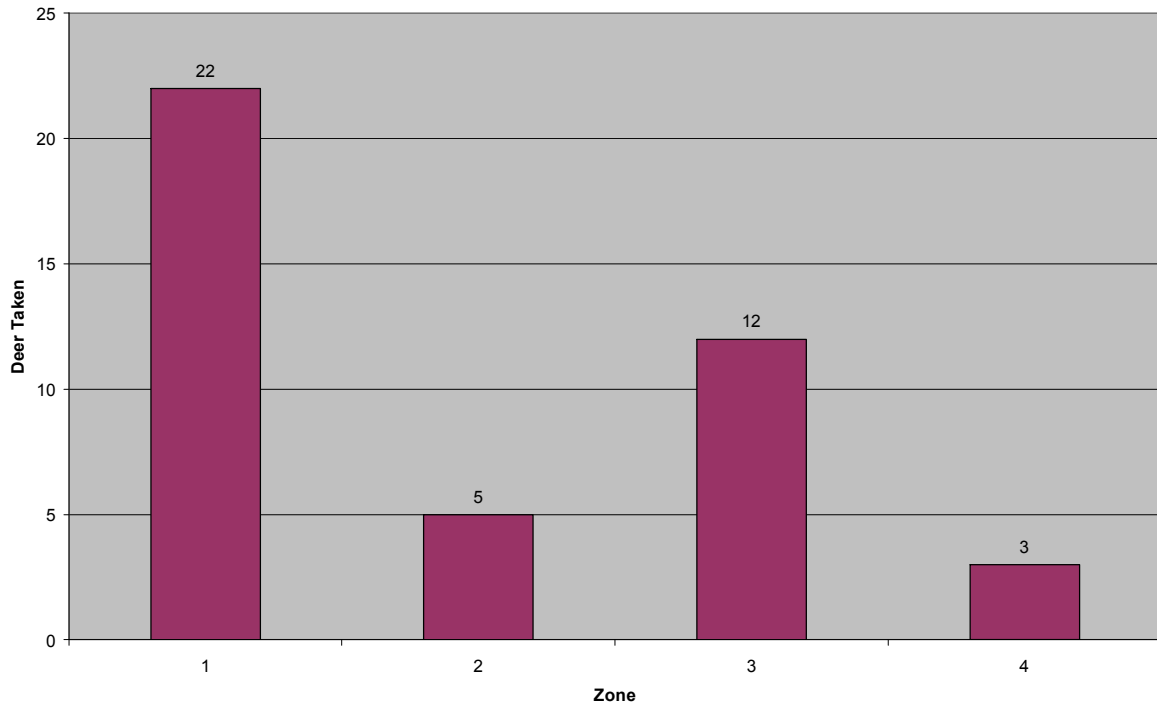
Bucks Taken Per Zone: 2006



Deer Taken Per Zone: 2006



Doe Taken Per Zone: 2006

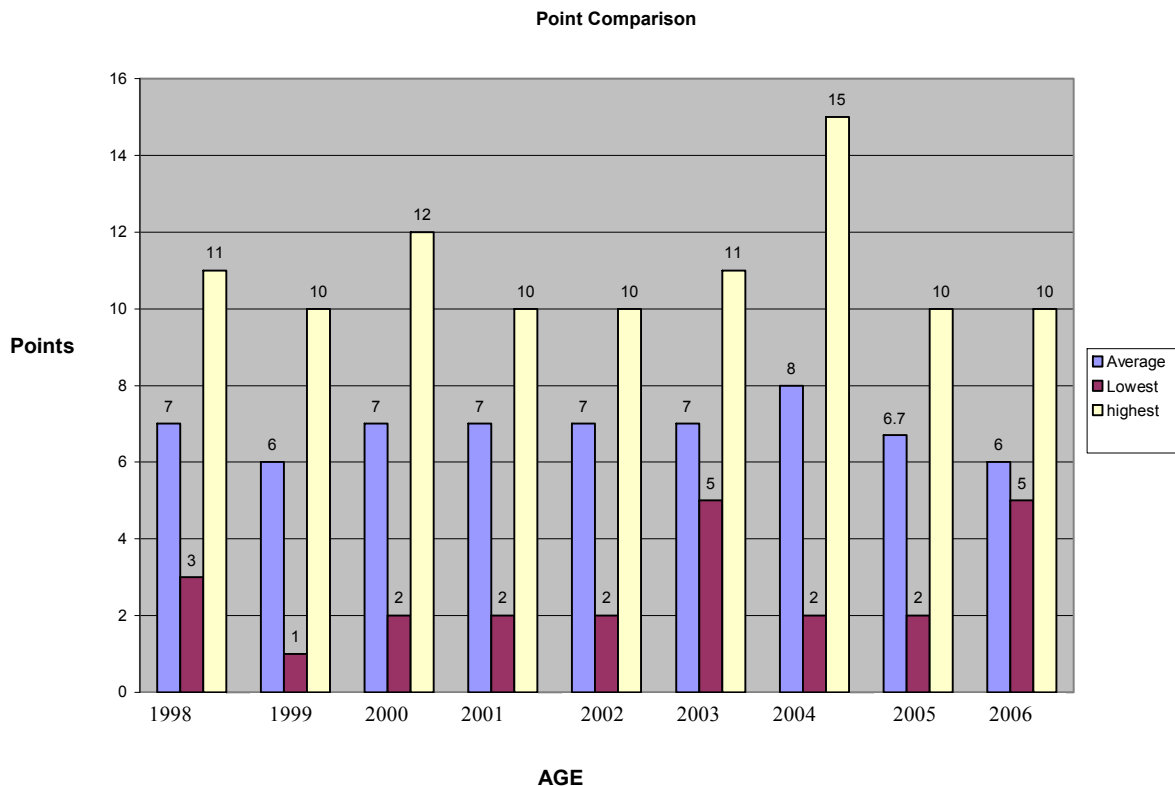


The greatest change occurred in zone one from 2004 to 2005. The number of buck and doe taken in zone one, two, and three were nearly identical. Zone four was substantially different with four out of the five of the total deer taken being bucks. This could show that the buck to doe ratio in zone four is not evenly distributed, or hunters are being more selective in choosing bucks over doe.

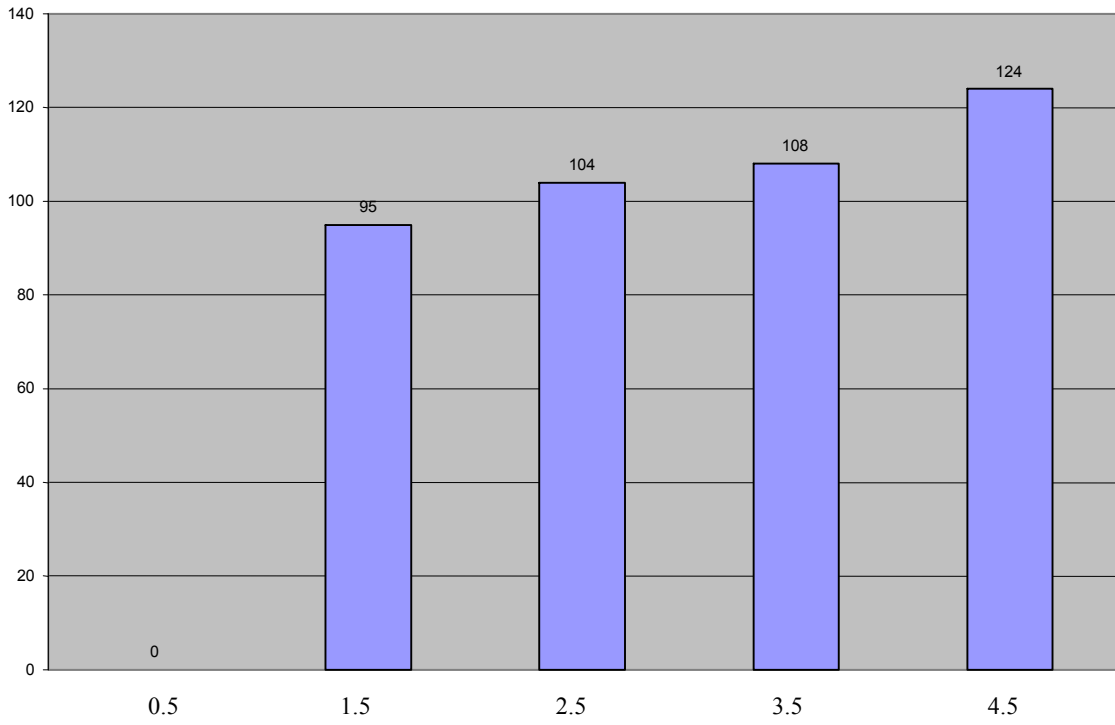
There was little difference in the number of bucks versus doe taken in zones one and two from . Zone three yielded two more doe than bucks, and zone four had three more bucks than doe in 2004.

For 2006, zone one yielded substantially more deer than any other zone. Fourteen bucks and eight doe were taken from zone one, accounting for more than half of all the deer harvested. There were 12 less deer taken in 2006 than in 2005.

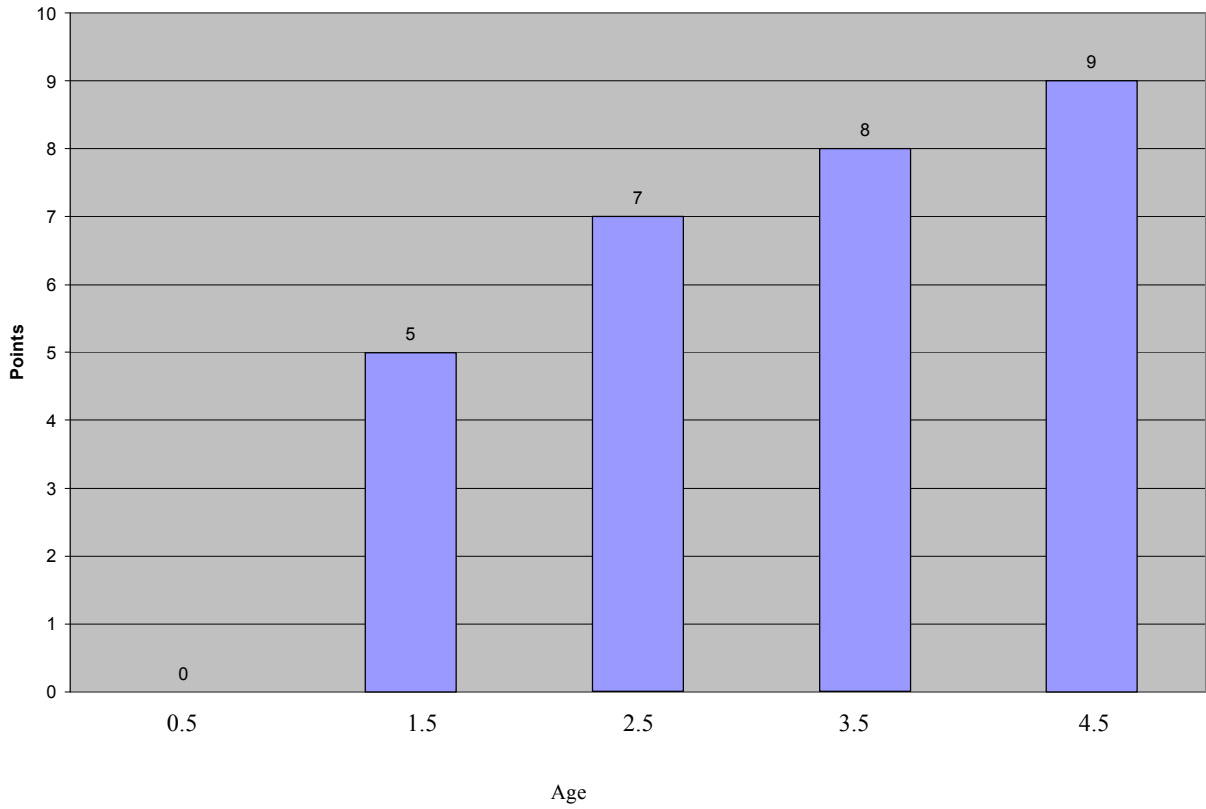
Average Weights and Points of Bucks



Average Weights of Bucks: 2003

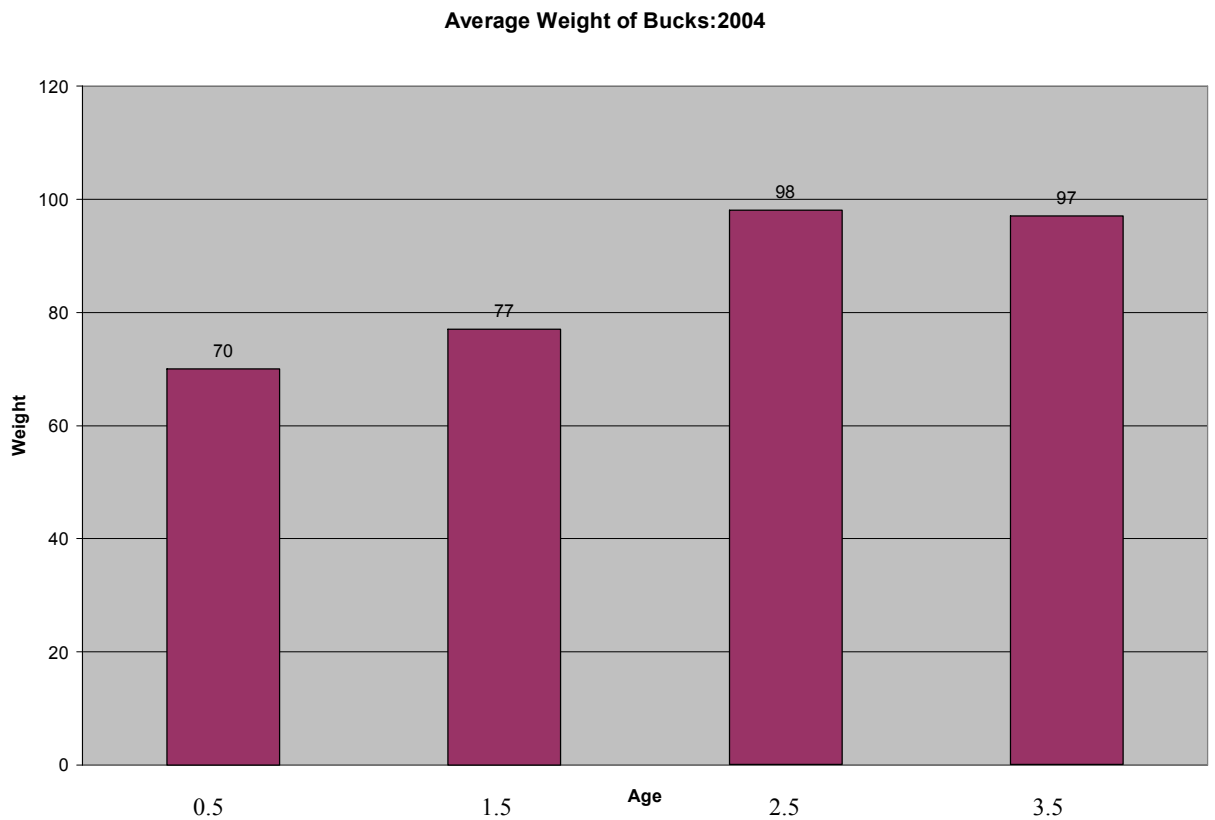


Average Points: 2003

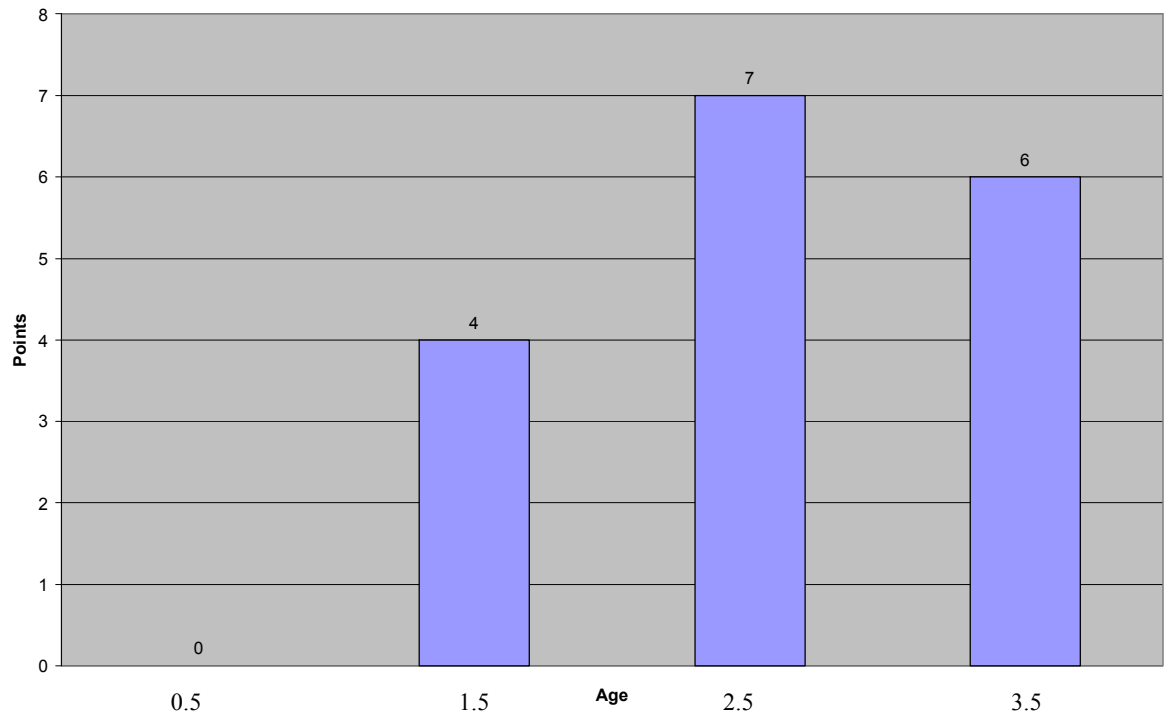


The 2003 graphs showing the average weight and points of bucks for the modern gun season illustrates that there were many bucks taken that were 2.5 years of age and this would account for the smaller rack point ratio.

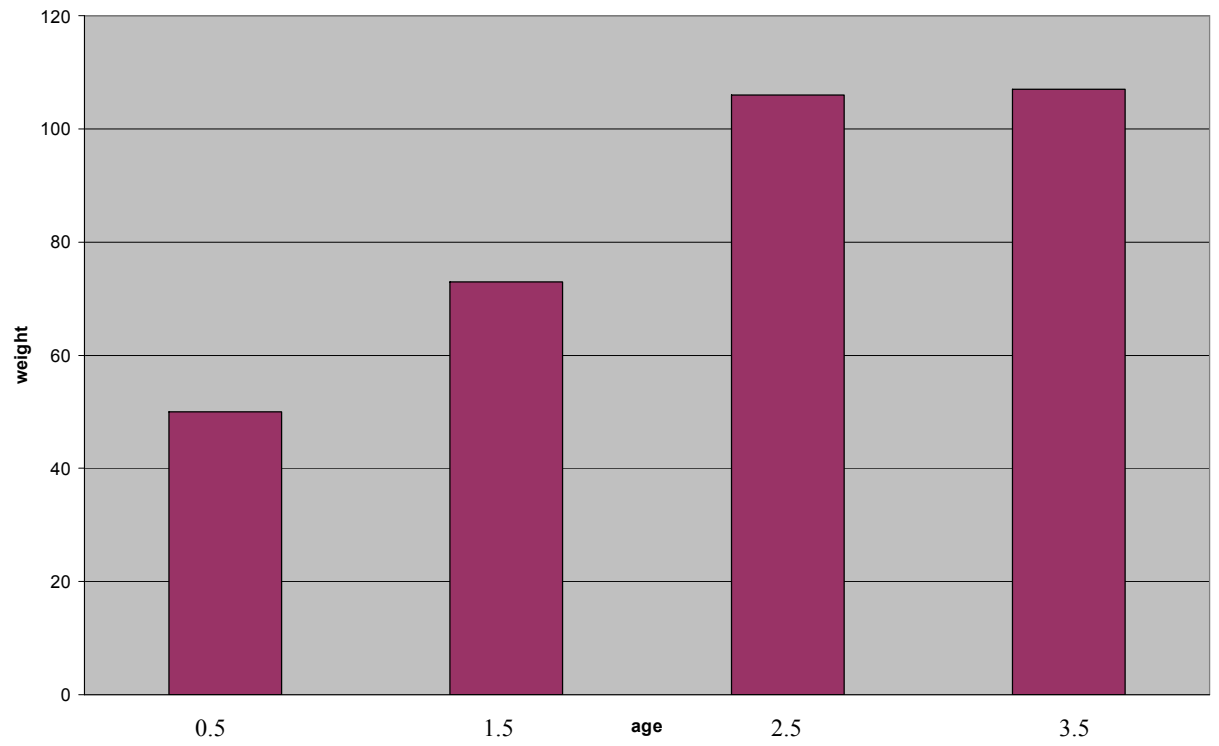
The average age of the bucks during the 2003 season was 2.5 to 3.5 years old, resulting in an average weight of 108 pounds. The average number of points was 7, indicating the young age at which they were harvested. Allowing deer to age beyond 3.5 years would possibly result in a higher average weight and rack size.



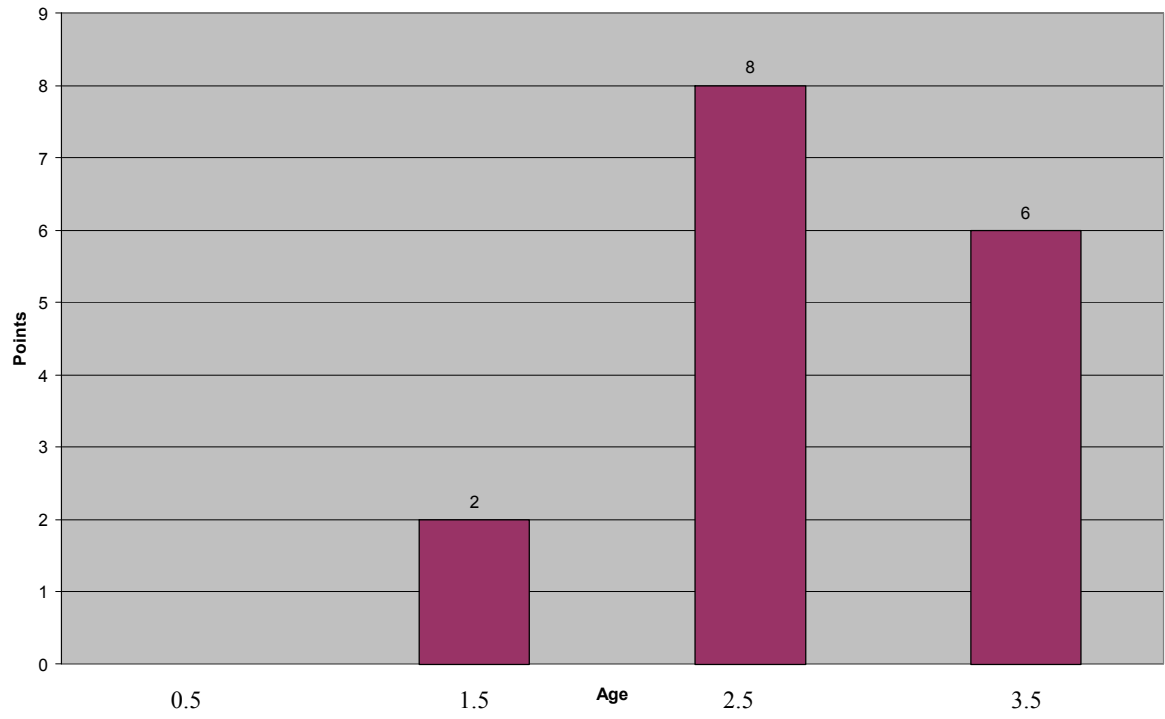
Average Points: 2004



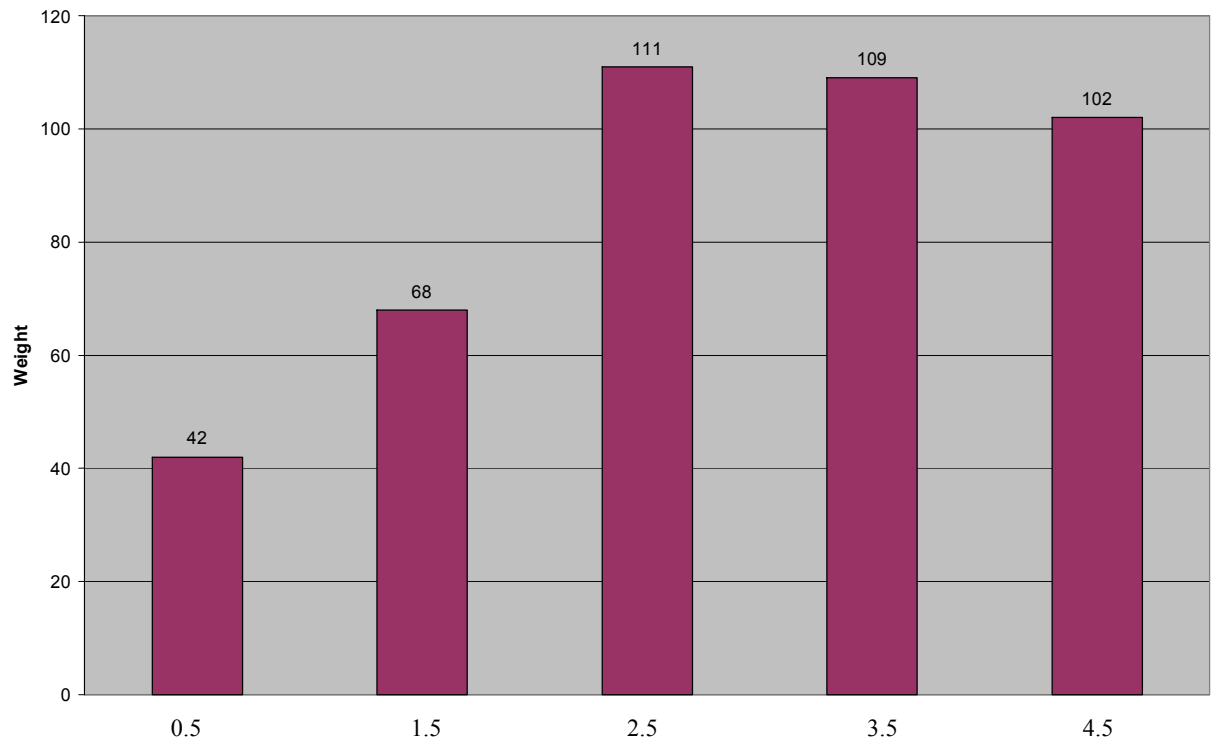
Average Weight of Bucks: 2005



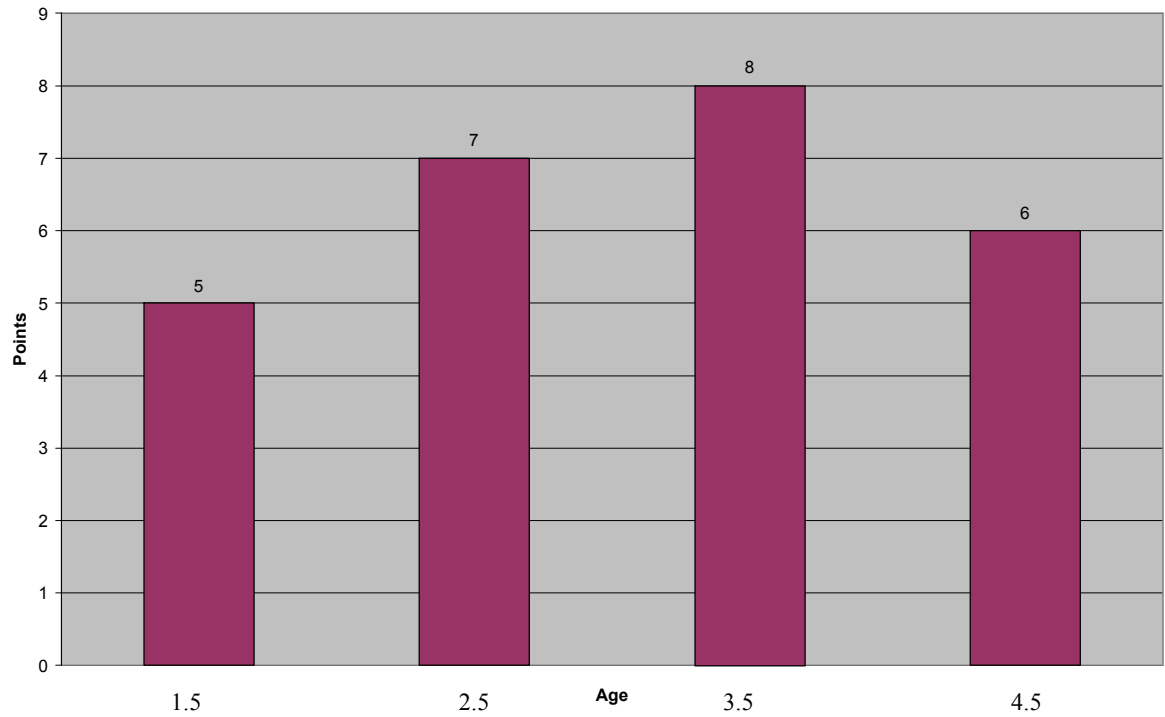
Average Points: 2005



Average Weights: 2006

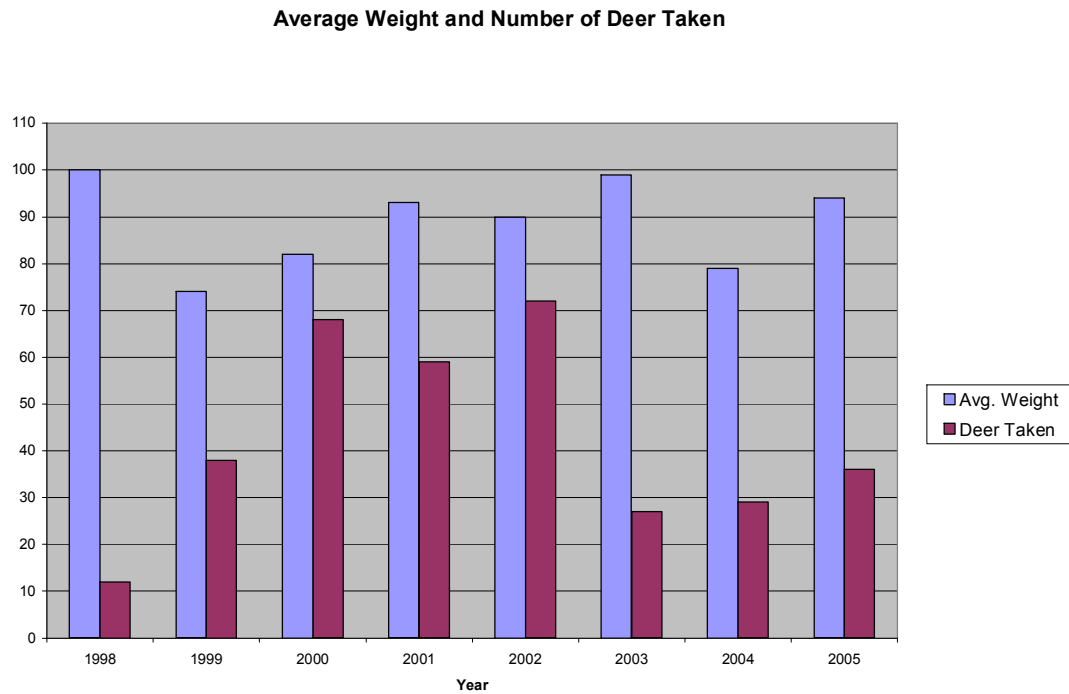


Average Points: 2006



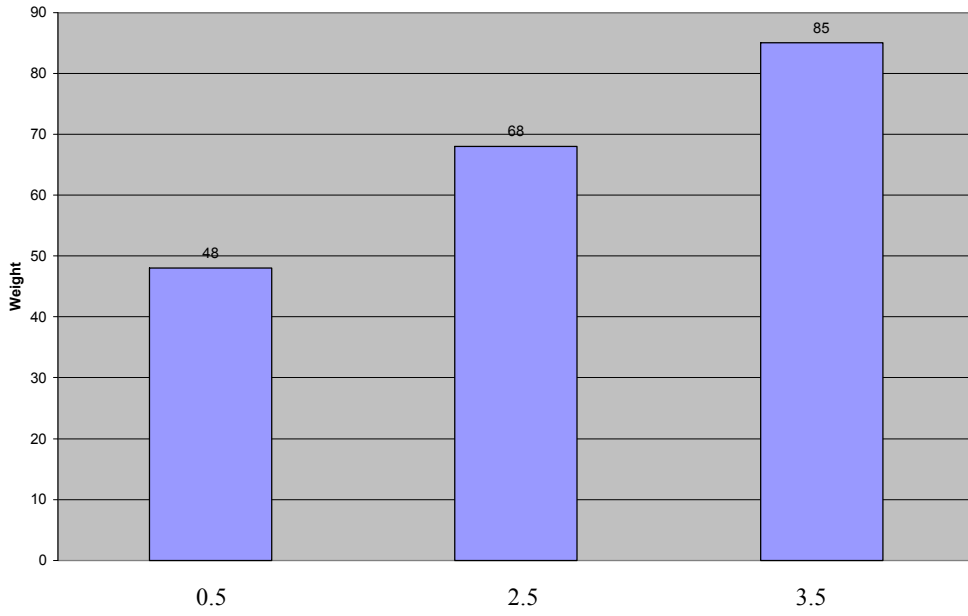
Average weight remains steady through all years, but is slightly lower in 2005 for the 0.5 age range. This may indicate poor nutrition for the young, or a later birthing period. It is also slightly high in 2006 for the 3.5 age range, with an average of 111 pounds. The average number of points was six.

Average Weights and Number of Deer Taken

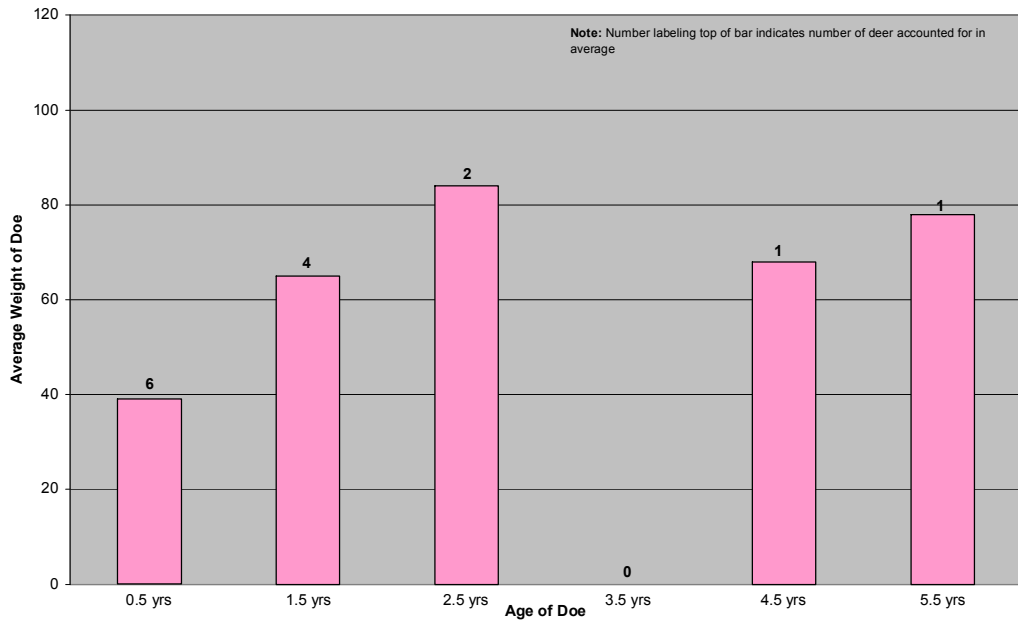


This graph shows that although there has been little fluctuation in the average weight of the deer over the years, the number of deer taken per year has had larger fluctuations. This could be due to the number of hunting permits used and number of buck and doe allowed per hunter. The number of deer taken should be watched carefully because it could be reflecting a negative impact in the population such as a decrease in the birth rate or the amount of food available.

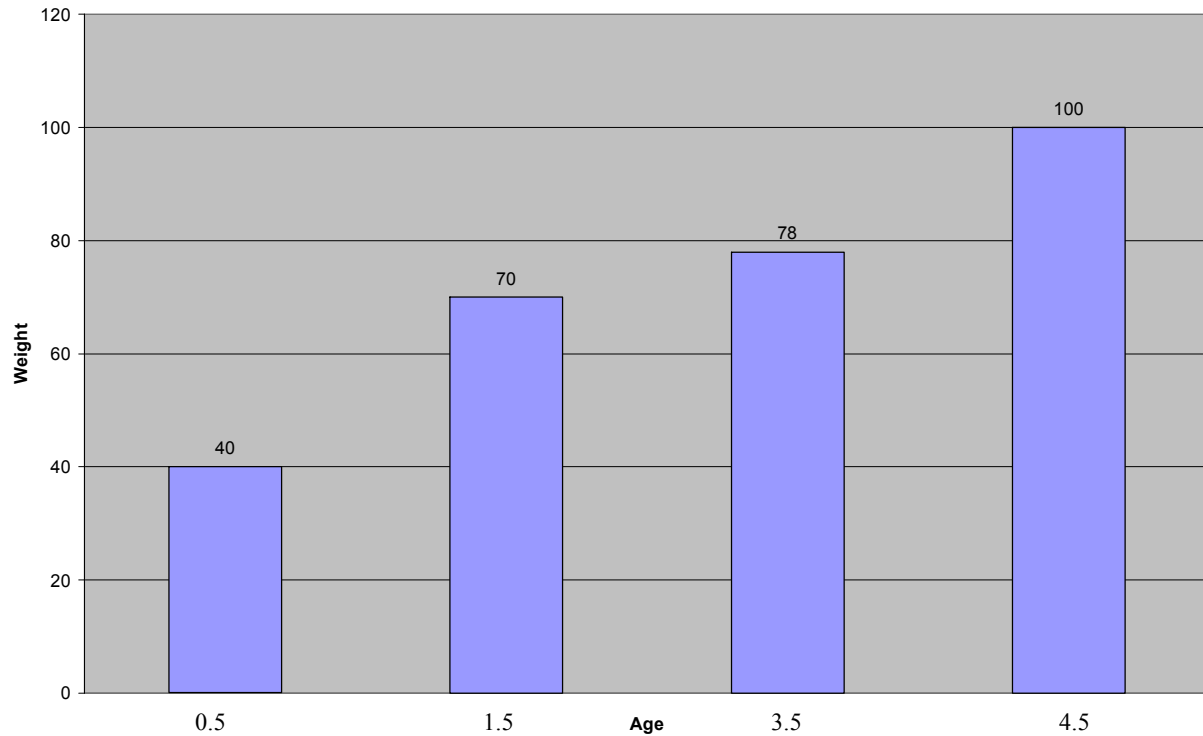
Average Weight of Doe: 2003



Average Weight of Doe: 2004 MG

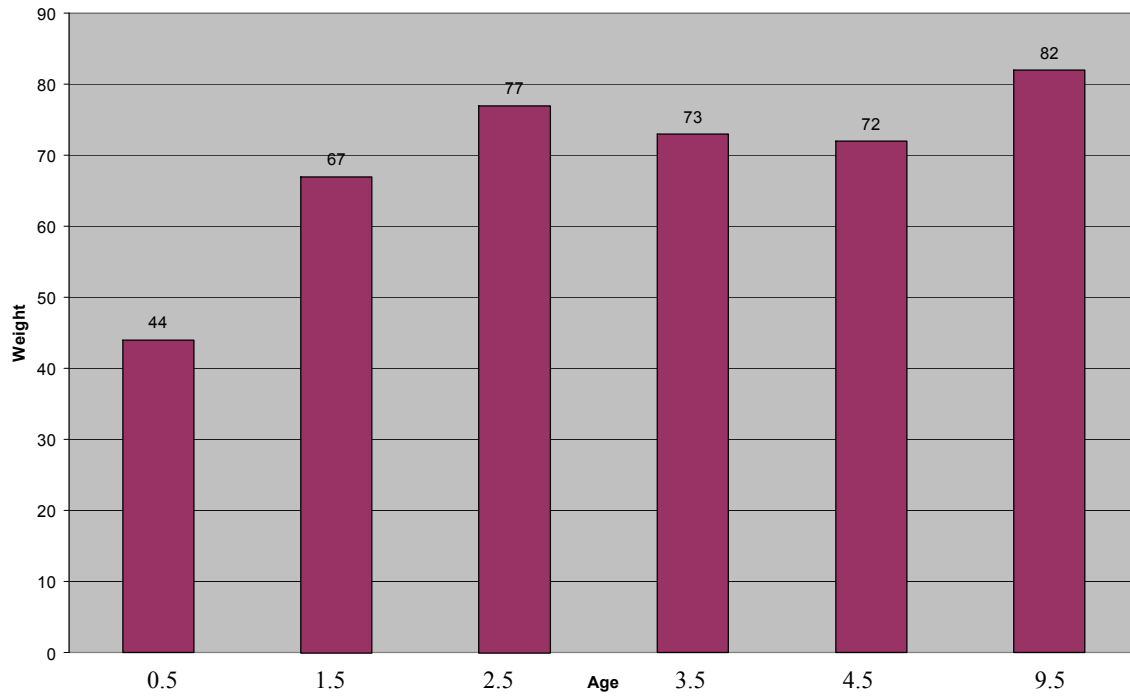


Average Weight of Doe: 2005



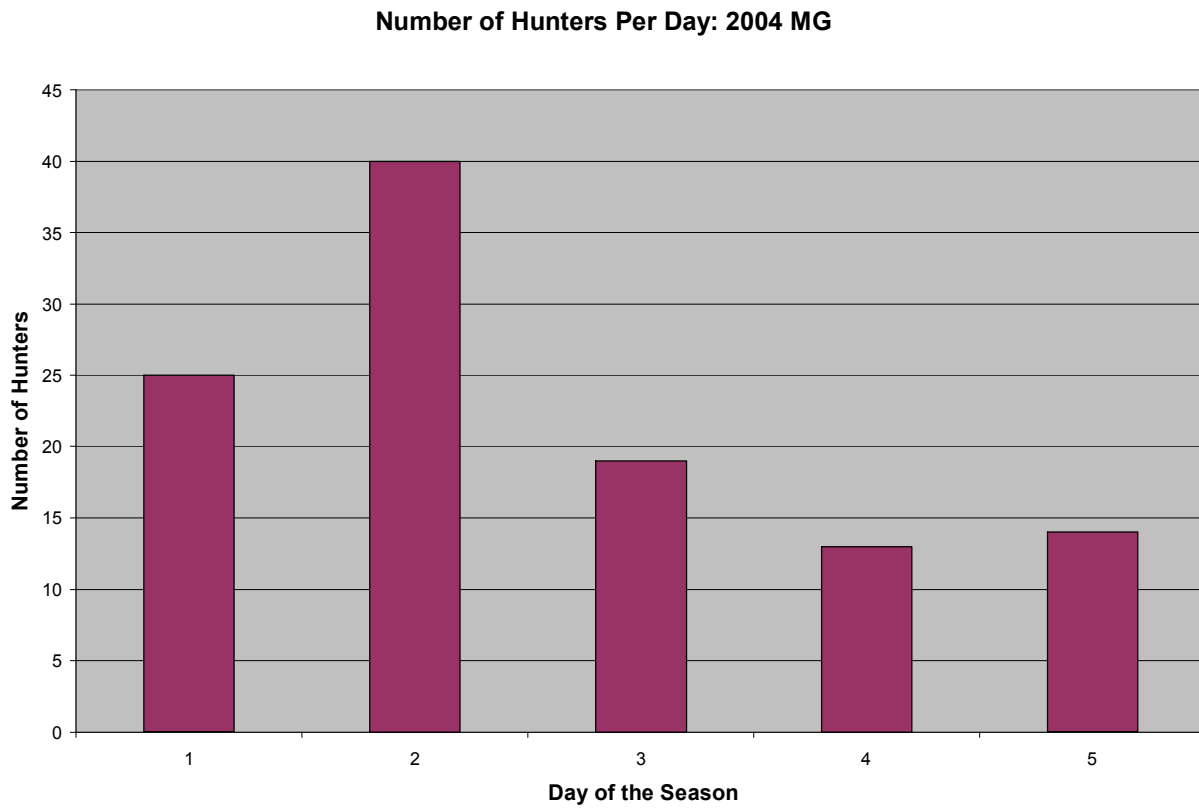
The graph of the average weight of doe for the 2004 MG season shows that the majority of doe being taken were in the age range of 0.5 to 1.5 years. There were very few in the age ranges of 2.5 to 5.5 years old. Doe fawns are being over-harvested and not being allowed to mature. If this continues there will be fewer doe for future hunting seasons because there will be less reproductive capacity.

Average Weight of Doe: 2006



For 2006, the majority of the deer taken were in the 2.5 age range. An extreme was found for the doe, with one being taken at 9.5 years. The rise in the age range being taken is fortunate, as it gives the deer time to reproduce, and shows that the deer are living to a prime age.

Number of Hunters per Day



Day one of the MG season is a Saturday, but the greatest amount of hunting occurred on the second day in 2004, perhaps due to better weather or a number of hunters working on Saturday. This data was not available for 2003, 2005, or 2006.